

60. 立体1 解答

(1) 8個

(2) 64cm

$$5 \times 4 = 20 \quad 4 \times 4 = 16 \quad 7 \times 4 = 28$$

$$20 + 16 + 28 = 64$$

(1) 6, 3

(2) 12, 6, 3

(1) 立方体

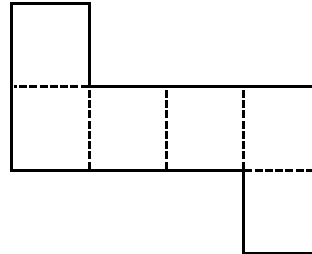
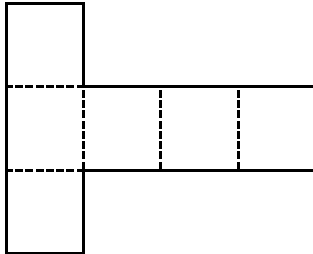
(2)

(3)

, , ,

(4) 辺BA

例...



61. 立体2 解答

(1) 辺FB, 辺BC, 辺CG, 辺GF

(2) 辺AB, 辺EF, 辺HG, 辺DC

(3) 面ADHE, 面BCGF

(4) 面DCGH, 面EFGH

(1) 辺EF, 辺HG, 辺EH, 辺FG

(2) 辺AE, 辺BF, 辺DH, 辺CG

(3) 面ABCD, 面EFGH

(4) 面ABFE, 面EADH

(5) 長方形

立方体は72cm, 直方体は52cm

62. 立体3 解答

(1) 三角柱

(2) 直角三角形

(3) 12cm

(4) 6cm

(1) 7cm

(2) 面D

(3) 2cm

(4) 面E

(5) 9cm

(6) 面F